



APPROACHING A CLINICAL ETHICS CASE WITH BIBLICAL WISDOM

2022 CPFI ANNUAL MEETING

JUSTIN W. COLE, PHARM.D, BCPS



LEARNING OBJECTIVES

- Construct a key ethical question given a scenario encountered in pharmacy practice.
- Employ all steps of the key ethical process to analyze an ethical question related to pharmacy practice.
- Demonstrate an ability to read and interpret key aspects of the Christian Bible and relate them to ethical scenarios in pharmacy practice.
- Create a solution to an ethical scenario faced in pharmacy practice using a defined process for ethical decision-making.



HOW DO CHRISTIANS MAKE ETHICAL DECISIONS?



MEANS OF CHRISTIAN ETHICAL DECISIONS

God's
Word

Reason

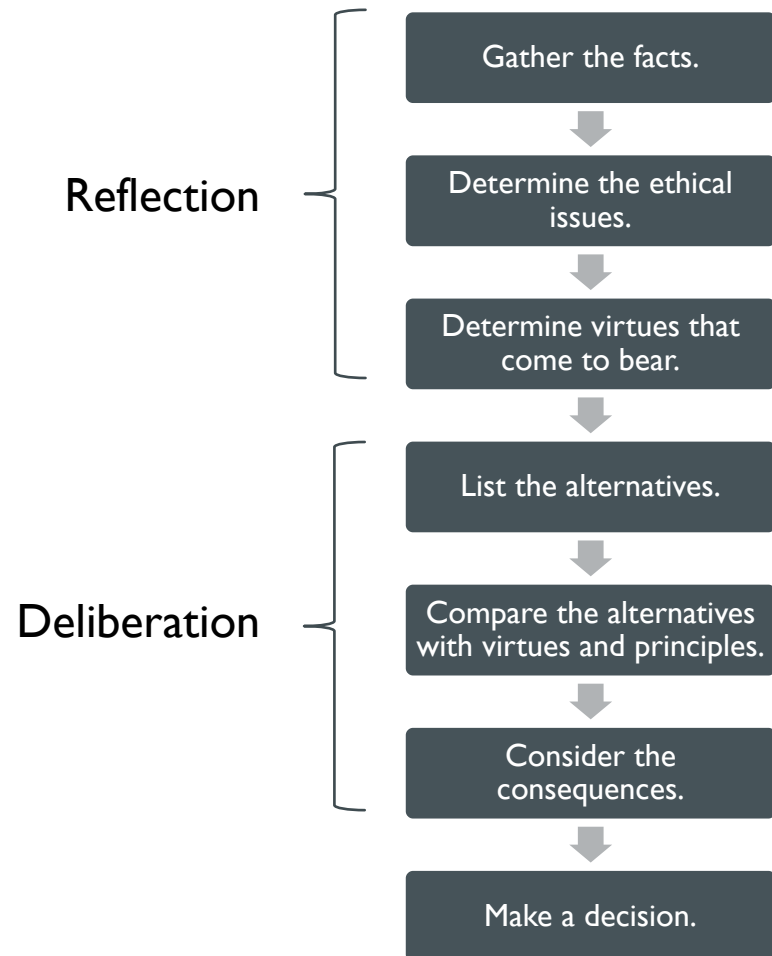
Prayer

The Holy
Spirit

Conscience

Community
of Believers

MODELS FOR MORAL DECISIONS

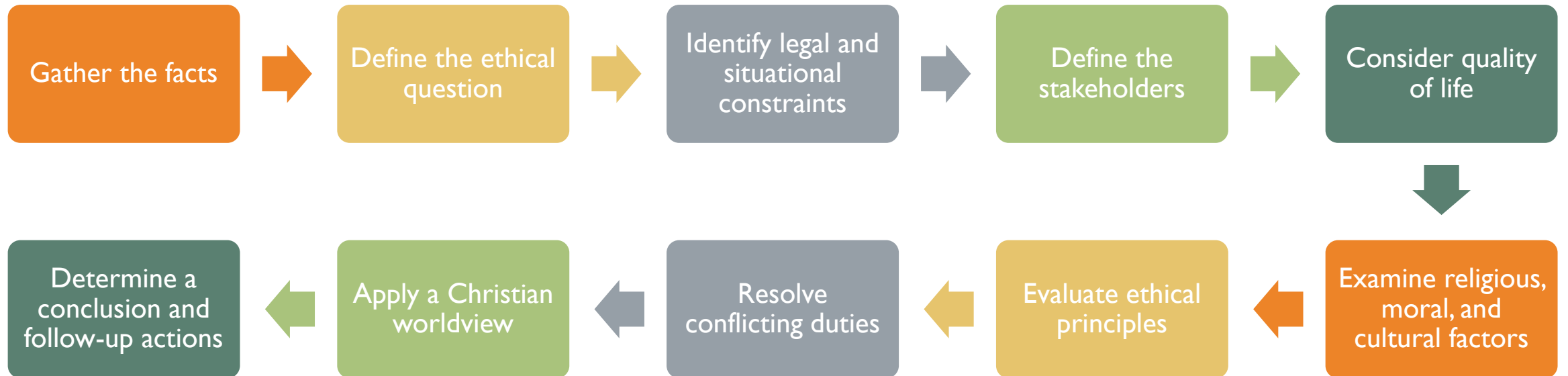


Combined model from Rae S.

Magnuson K model

- Pre-reflection
- Reflection
- Deliberation
- Evaluation

CLINICAL ETHICS ANALYSIS





APPLICATION OF A CHRISTIAN WORLDVIEW TO A CLINICAL CASE



APPROACHING THE BIBLE AS THE SOURCE FOR CHRISTIAN ETHICS

Descriptive task

- What does the Bible actually say?

Synthetic task

- What does the whole Bible say?

Hermeneutical task

- How does the Bible relate to our situation?

Pragmatic task

- What fruits are produced by our reading and actions?

ETHICS AND REDEMPTIVE HISTORY

How do we discern which laws apply today?

- Old Testament Law
 - 600+ Jewish Laws in the Old Testament (moral, civic, and ceremonial)
 - Which of these are binding today?
- New Testament Fulfillment
 - Jer 31:31, Rom 10:4, Heb 8:6-13

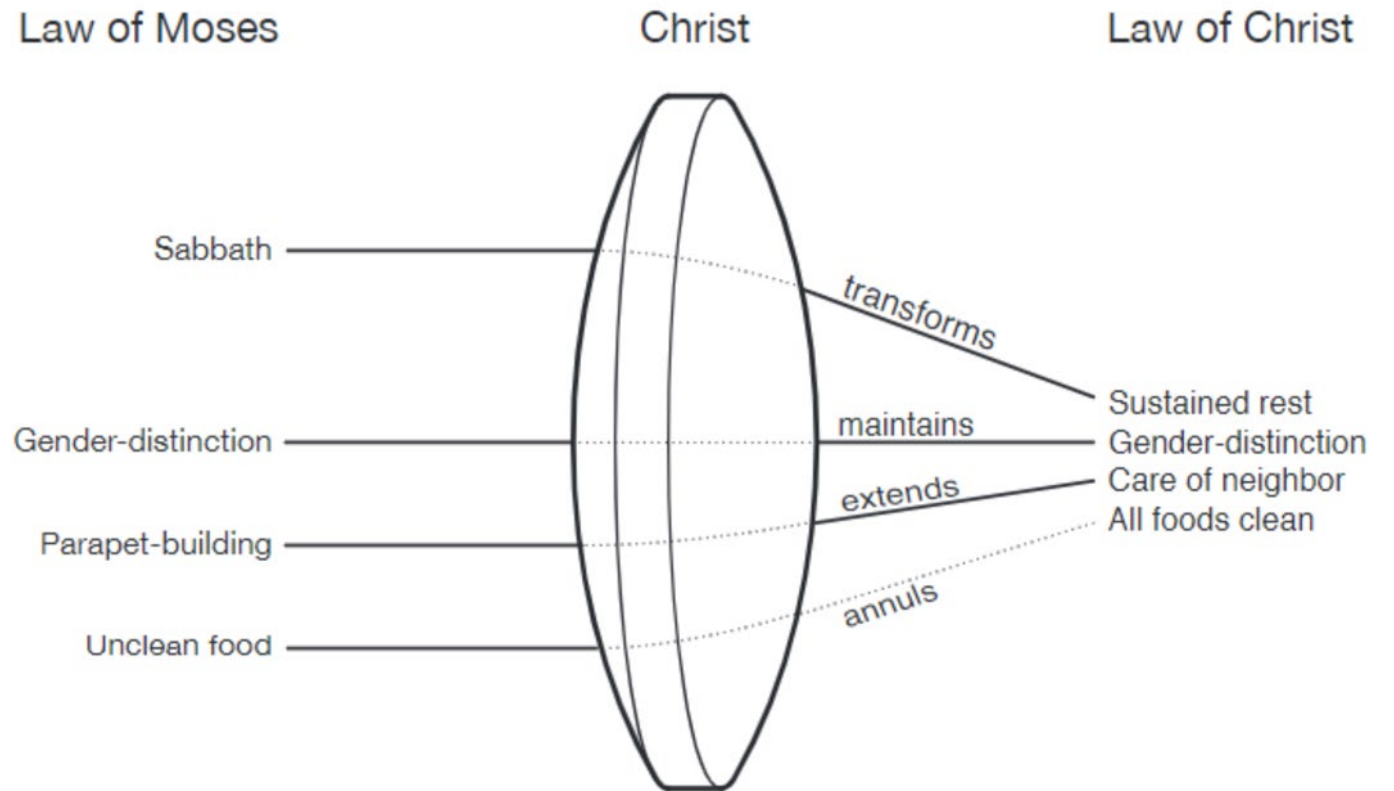
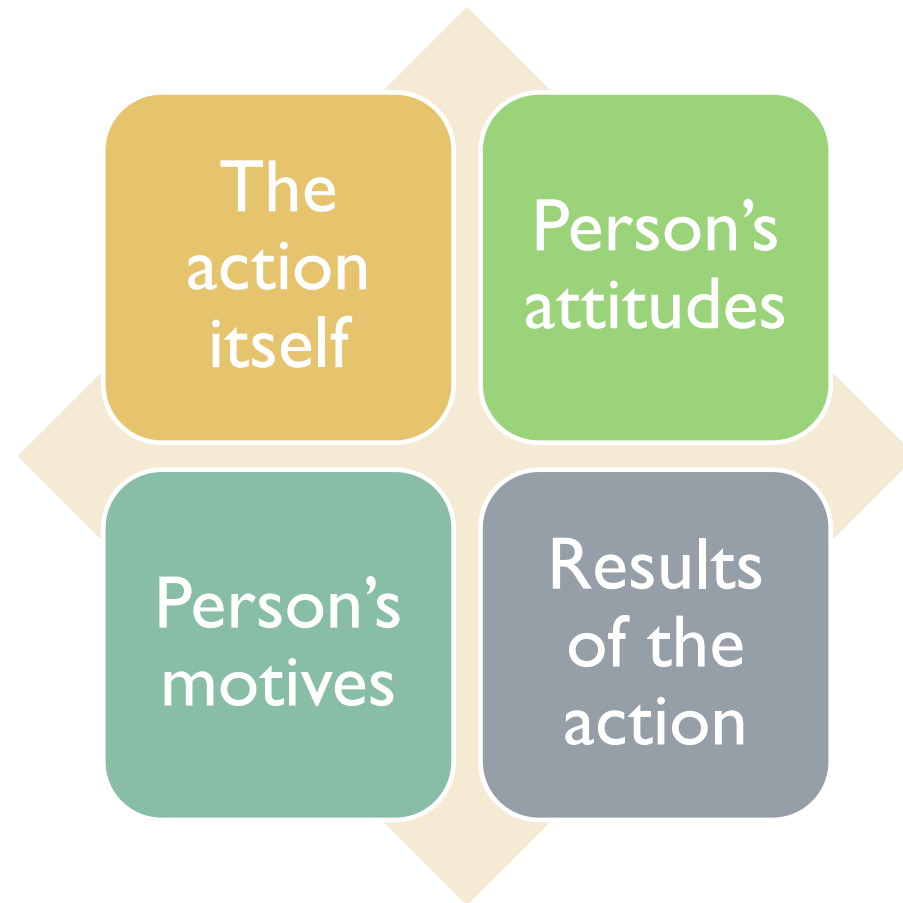


Fig. 12.3. The Law's Fulfillment through the "Lens" of Christ¹³

FOUR DIMENSIONS OF ACTIONS ACCORDING TO CHRISTIAN ETHICS



CONSCIENCE AND MORAL COMPLICITY

- Moral complicity – taint or moral guilt from becoming involved in or accomplice to a moral wrong
 - Formal participation
 - Material participation
- Factors to consider:
 - Timing
 - Proximity
 - Certitude
 - Knowledge
 - Intent

WILL I EVER
HAVE TO
CHOOSE
BETWEEN
THE “LESSER OF
TWO EVILS?”

*“IMPOSSIBLE” MORAL
CONFLICTS*





PATIENT CASES



SUMMARY

- It is important to collect the facts and outline the key question when faced with an ethical dilemma in practice.
- Having a process can aid in properly answering ethical questions in pharmacy practice.
- The application of Christian ethics requires an ability to read and interpret key aspects of the Bible in light of redemptive history.
- As Christians, gray areas in practice should be approached prayerfully, carefully, and non-judgmentally.



APPROACHING A CLINICAL ETHICS CASE WITH BIBLICAL WISDOM

2022 CPFI ANNUAL MEETING

JUSTIN W. COLE, PHARM.D, BCPS

