

CPFI NATIONAL STUDENT COUNCIL FALL/WINTER 2025 NEWSLETTER

MEDICINE & MINISTRY



Serving Christ and the World
Through Pharmacy

A Letter From The Editor

by Georgia Cockerham

As pharmacy students and professionals, we're constantly balancing science and service, deadlines and devotion. This issue of the CPFI Newsletter reminds us that faith and pharmacy are not separate callings but deeply intertwined ones. In every prescription we verify and every patient we counsel, there's an opportunity to reflect Christ's love — through our words, deeds, devotion and diligence.

As healthcare providers, we're entrusted not just with medications but with moments of compassion.

Each interaction — whether with a patient, peer, or preceptor — is a chance to offer the kind of care that points back to the One who provides the greatest care of all. Service in pharmacy isn't only about accuracy and knowledge; it's about empathy, presence, and humility. When we let Christ's compassion shape our practice, even the smallest acts can become ministry.

May this issue encourage you to serve with purpose, to see beyond the tasks and into the hearts of those you care for, and to remember that your work is an extension of God's healing. Thank you for being a light in your homes, classrooms, pharmacies, and communities.

In this issue

Opening Letter

Scripture to Ponder

Updates

Chapter Testimonies

NSC Members


Contact Information
& Social Media

SCRIPTURE TO PONDER

Bible Verses


Mark 10:45

In a profession built on service, this verse reminds us that true leadership begins with humility. Christ, the ultimate healer, modeled a life of selfless compassion — one that inspires us to serve our patients and peers not for recognition, but because of Christ's love. Every act of care, no matter how routine, mirrors His example.



1 Peter 4:10

Each of us has been entrusted with unique gifts — such as knowledge, empathy, precision, patience — that can become vessels of God's grace in healthcare. This verse calls us to use our training and talents intentionally, serving others as an expression of our faith and gratitude. In doing so, we turn pharmacy practice into ministry.



“For even the Son of Man did not come to be served, but to serve, and to give His life as a ransom for many.”

Mark 10: 45



“Each of you should use whatever gift you have received to serve others, as faithful stewards of God's grace in its various forms.”

1 Peter 4:10

REFLECTION QUESTIONS

1. How can I approach my studies, rotations, or work this week with the same servant-hearted mindset that Jesus modeled in Mark 10:45?
2. What specific gifts or strengths has God entrusted to me, and how can I use them to serve patients, classmates, teachers, colleagues, family members, friends or coworkers more intentionally?
3. When the demands of pharmacy feel overwhelming, how can I remind myself that even small acts of care and kindness are forms of ministry that reflect God's grace?

UPDATES

Annual Conference

Below is the flyer for the CPFI 2026 Annual Conference & National Student Retreat!

Registration opens January 5, 2026



Save The Dates

CPFI 2026 ANNUAL CONFERENCE & NATIONAL STUDENT RETREAT

Christian Pharmacists Fellowship International
Serving Christ and the World Through Pharmacy

NATIONAL STUDENT RETREAT June 3 to June 7, 2026
ANNUAL CONFERENCE June 4 to June 7, 2026

Conference expenses paid by a generous member donor!
The cost of your room, meals, and registration will be paid by a generous CPFI member donor. Travel and other expenses are not included. **Space is limited so register early!**

To register and learn more visit:
www.cpfi.org/annual-meeting
Registration opens January 5, 2026

Finding Help in an Ever-Changing World.
Psalm 121

Lake Junaluska

12 HOURS ACPPE APPROVED CE AVAILABLE!

Membership Renewal/Sign Up

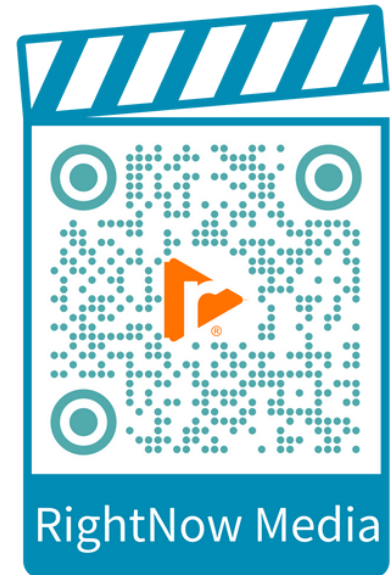
If you need to renew your membership or if you would like to join CPFI, go to www.cpfi.org

Missions

CPFI is partnering with the Christian Medical and Dental Association (CMDA) and the Fellowship of Christian Nurses to send out short-term medical teams through Global Health Outreach. Here is the link to the list of missions coming up and their application details:
<https://gho.servicereef.com/events>

RightNow Media Access

Scan the QR code below to access RightNow Media for free through your CPFI membership.



What is RightNow Media?

RightNow Media is a tool that can help you live out your faith in every area of your life - at home, at work, and in your community. CPFI now has a custom library set up for our members! Log in to your Rightnow Media account and from the homepage click on the CPFI custom library tab in the upper right corner of the screen. This will provide suggestions for videos on a variety of topics.

CHAPTER TESTIMONIES

Across the nation, CPFI student chapters are serving their campuses and communities through fellowship, outreach, and faith-centered initiatives.

University of Maryland, Baltimore



“Over the summer, CPFI collaborated with APhA, ASCP, and the Peter Lamy Center to support two community health fairs promoting wellness and preventive care. The first event was held at the Randallstown Community Center, where pharmacy students provided blood pressure screenings and medication counseling. The second event took place at Sweet Hope Free Will Baptist Church and brought together pharmacy and nursing students to provide blood pressure checks, personalized health education, and one-on-one consultations, engaging residents in conversations about chronic disease management and healthy lifestyle habits. Together, these interprofessional outreach efforts strengthened students’ patient-counseling and clinical skills while addressing health disparities and highlighting the important role of pharmacists and nurses in community health.”

-Jamie Padilla, School Chapter National Representative

“Our chapter launched the semester with an engaging tabling event designed to introduce CPFI’s mission of serving Christ through pharmacy and supporting students in faith and professional growth. The e-board members welcomed students with donuts and gospel booklets, sparking meaningful conversations about integrating faith and pharmacy practice. We connected with approximately 40 students, several of whom expressed strong interest in becoming members. This outreach not only increased awareness of CPFI on campus but also set a positive tone for fellowship and service opportunities in the months ahead.”

-Jamie Padilla, School Chapter National Representative



CHAPTER TESTIMONIES

Across the nation, CPFI student chapters are serving their campuses and communities through fellowship, outreach, and faith-centered initiatives.

Samford University

“On September 2nd, we welcomed first year students with a Lunch Fellowship Meeting and the Student Organization Membership Drive. On the 25th, we hosted a P3 student panel on how we can better focus on our purpose in the Lord and not hustle culture, our grades, and our future career with some practical ways to turn our focus on Him. We are excited to continue our series on "God's Prescription for Us" discussing purpose, worship, and ministry. We will also continue going through the Fruits of the Spirit during our weekly Cadre, or small group. Later this fall, we will host our Operation Christmas Child Packing Party!”

-Kayla Hay, NSC National Student Retreat Coordinator, Student Chapter President



CHAPTER TESTIMONIES

Across the nation, CPFI student chapters are serving their campuses and communities through fellowship, outreach, and faith-centered initiatives.

University of South Carolina



"A few students from USC went to the National Student Retreat! We are now trying to set up community service events for each month this year! We are in the process of partnering with Midlands Orphan Relief to volunteer in packaging Care Kits for children of the midlands. These kits include basic necessities for the children in need. We made 14 care kits for children in need, partnered with River Banks zoo to pass out candy to the children for Halloween, and coming up we are doing our operation Christmas child event!"

-Abigail Bristow, Student Chapter President



2025-26 NATIONAL STUDENT COUNCIL MEMBERS

Chairperson



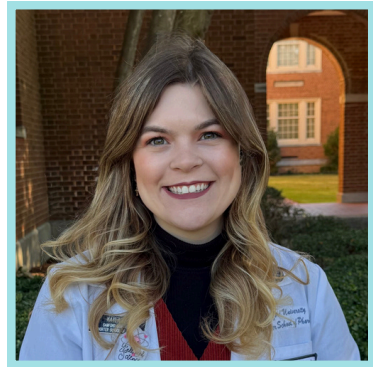
Logan Grove
logangrove@cedarville.edu

Chairperson Elect



Kurt Seymour
kdsemyour@umes.edu

National Student Retreat Coordinator



Kayla Hay
khay@samford.edu

Publicist



Georgia Cockerham
georgia.cockerham@bruins.belmont.edu

Member Transitions Coordinator



Hali Powell
epowell3@samford.edu

CONNECT WITH US!

Contact

Christian Pharmacists Fellowship International

P.O. Box 1154

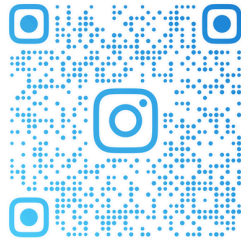
Bristol, TN 37621-1154

United States

423-844-1043

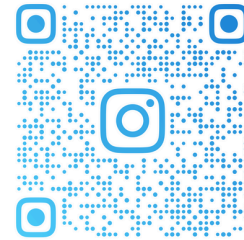
office@cpfi.org

MAIN INSTAGRAM



CHRISTIANPHARMACISTSFI

STUDENT INSTAGRAM



CPFI_STUDENTS

LinkedIn



facebook



“Therefore, as God’s chosen people, holy and dearly loved, clothe yourselves with compassion, kindness, humility, gentleness and patience.”

-Colossians 3:12

Thanks for reading!

Newsletter by: Georgia Cockerham, PharmD Candidate at Belmont University, NSC Publicist