

CPFI NATIONAL STUDENT COUNCIL SPRING 2026 NEWSLETTER



Serving Christ and the World
Through Pharmacy

In this issue

Scripture to Ponder

Follow Me Series

Annual Conference

Chapter Testimonies

NSC Members

Contact Information

SCRIPTURE TO PONDER

Colossians 3: 23-24

This verse reminds us that our work is not ultimately for people, but for the Lord. In pharmacy and healthcare, it is easy to focus on expectations from professors, preceptors, and patients, working to gain approval, or to prove something to ourselves. This verse shifts our perspective, pointing us back to our true purpose—serving Christ.

When we take this to heart, our motivation changes. Instead of seeking recognition, we are called to work with a sincere and willing heart in all that we do. Even in routine or challenging moments, our work becomes steady and purposeful, grounded in the truth that we are only serving the Lord.

“Whatever you do, work at it with all your heart, as working for the Lord, not for human masters, since you know that you will receive an inheritance from the Lord as a reward. It is the Lord Christ you are serving.”

Colossians 3: 23-24

REFLECTION QUESTIONS

1. What motivates the way I approach my studies, rotations, or patients, and how does that align with serving the Lord?
2. In what areas of my life or work do I tend to seek recognition, and what would it look like to pursue faithfulness instead?
3. How can I practically shift my mindset this week so that even routine tasks become intentional acts of service to Christ?

Introducing the 'Follow Me' Series!

CPFI has been shaped by faithful individuals who have used pharmacy as a way to serve Christ and others. Whether through leadership, mentorship, prayer, or quiet acts of service, their example reminds us of 1 Corinthians 11:1, “*Follow my example, as I follow the example of Christ.*” This new series highlights their impact and encourages student pharmacists to see faith and pharmacy as opportunities to lead with purpose, compassion, and Christ-centered service.

~Meet Gregory C. Carlson, PharmD~

Greg Carlson’s life and legacy remarkably testify to his faithful service to both the Lord and the profession of pharmacy. Since surrendering his life to Christ in 1983, Greg has anchored his journey in the truth of the gospel, holding firmly to the foundational promises of 1 Corinthians 15:3–4 and Ephesians 2:8–9. His commitment to Christ consistently shows in his desire to walk alongside other believing pharmacists, leading him to become an active and devoted member of CPFI beginning in 1987. In rural practice, where fellowship can be scarce, Greg not only sought the encouragement of fellowship with like-minded believers, but he also became a source of encouragement to others. He has faithfully served CPFI as a board member, secretary, treasurer, and vice president over many years. His leadership has been marked by humility, integrity, and a steadfast commitment to advancing CPFI’s mission.

Beyond organizational leadership, Greg’s life powerfully exemplifies service in action. He willingly travels wherever the Lord calls—whether across the globe with Global Health Outreach (GHO) or into crisis zones with a Samaritan’s Purse Disaster Assistance Response Team—demonstrating extraordinary courage and devotion. Greg delivers both patient focused-care and the compassion of Christ to those in greatest need, from Ethiopia to Ukraine, from hurricane-ravaged islands to war-torn regions. Greg's extensive missions service with GHO dates back to 2012. Remarkably, he undertook rigorous disaster response training in 2018 at age 70 and continues serving on demanding international missions well into his mid-to-late seventies. His current readiness to go again highlights a life fully yielded to God’s purposes.

Greg’s witness extends into every sphere of his life—through his decades of professional excellence, his military service in Vietnam, his faithful role as a deacon at Grace Baptist Church, and his partnership in ministry alongside his wife, Margaret. Together, they model a life of enduring faithfulness, even welcoming their family into the fellowship of CPFI gatherings. Greg Carlson exemplifies perseverance, servant leadership, and unwavering trust in God’s grace. His life serves as a powerful testimony that encourages and strengthens the entire body of Christ through faithful obedience sustained over time.

ANNUAL CONFERENCE

The 2026 CPFI Annual Conference & National Student Retreat is currently full, but students are encouraged to plan ahead for the 2027 conference.

2027 CPFI Annual Conference and National Student Retreat

Where? The Ark Encounter in Williamstown, Kentucky.

National Student Retreat: June 2–6, 2027

Annual Conference: June 3–6, 2027

Registration: Opens Monday, January 11, 2027, and closes Monday, April 12, 2027.

Be sure to mark your calendars early so you do not miss the opportunity to attend!



CHAPTER TESTIMONIES

Across the nation, CPFI student chapters are serving their campuses and communities through fellowship, outreach, and faith-centered initiatives.

University of Maryland Eastern Shore

Over the past few months, Farryn Lymon shared that her CPFI chapter at the University of Maryland Eastern Shore has remained actively engaged in both fundraising and campus outreach initiatives. Most recently, the chapter partnered with APhA-ASP to host a bake sale fundraiser on campus, creating a valuable opportunity for collaboration with fellow student organizations while raising support for chapter activities. They also held their annual Valentine's Day Treat Gram fundraiser, where treats and encouraging messages were distributed to students within the School of Pharmacy and Health Professions, as well as administrators across campus. This event helped foster community, spread kindness, and share Christ-centered love throughout their academic environment.



Looking ahead, the chapter is working to establish a partnership with a local Christian school that serves elementary, middle, and high school students. Through this collaboration, they hope to participate in meaningful community service initiatives while educating students about the role of pharmacists in healthcare. Their goal is to help younger students better understand the impact pharmacists have on patient care and to potentially inspire future interest in the profession. This partnership would allow the chapter to continue serving its community through faith-based outreach while investing in the next generation of healthcare professionals.

CHAPTER TESTIMONIES

Across the nation, CPFI student chapters are serving their campuses and communities through fellowship, outreach, and faith-centered initiatives.

University of South Carolina

This semester, USC's CPFI chapter continued to serve their community through meaningful outreach and fellowship. They participated in Operation Christmas Child, hosted a medical mission trip packing event, and created Valentine's Day cards for residents in nursing homes. They also kicked off the semester by gathering for their first small group, fostering connection and spiritual growth within their chapter.



2025-26 NATIONAL STUDENT COUNCIL MEMBERS

Chairperson



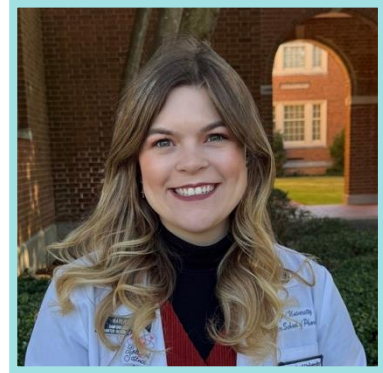
Logan Grove
logangrove@cedarville.edu

Chairperson Elect



Kurt Seymour
kdsemyour@umes.edu

National Student Retreat Coordinator



Kayla Hay
khay@samford.edu

Publicist



Georgia Cockerham
georgia.cockerham@bruins.belmont.edu

Member Transitions Coordinator



Hali Powell
epowell3@samford.edu

CONNECT WITH US!

Contact

Christian Pharmacists Fellowship International

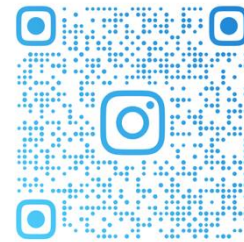
P.O. Box 1154
Bristol, TN 37621-1154
United States
423-844-1043
office@cpfi.org

MAIN INSTAGRAM



CHRISTIANPHARMACISTSFI

STUDENT INSTAGRAM



CPFI_STUDENTS

Facebook @CPFI | LinkedIn @Christian Pharmacists Fellowship International

“But seek first his kingdom and his righteousness, and all these things will be given to you as well.”

Matthew 6: 33

Thanks for reading!

Newsletter by: Georgia Cockerham, PharmD Candidate at Belmont University, NSC Publicist